



www.sprayfoamatdow.com

LEADERS OF THE PAK

FROTH-PAK™ FOAM INSULATION KIT

FROTH-PAK™ FOAM SEALANT KIT

A leading cause of energy loss: air infiltration through gaps and cracks. In fact, between 25-40 percent of a home's energy loss is from air escape routes around the home.** But it can get worse. Where there's air, there's most likely moisture, which can lead to mold and mildew and other moisture-related problems. And don't forget dust, smoke, outside noise and insects that may invade an unsealed building envelope. You can lead the homeowner away from this costly and potentially damaging scenario by choosing FROTH-PAK™ products from Dow.

PUT A STOP TO IT

Stop air infiltration and its side effects with FROTH-PAK™ Foam Insulation kits* and FROTH-PAK™ Foam Sealant kits. Two-component, quick-cure FROTH-PAK™ polyurethane foams quickly expand to fill cavities, penetrations and cracks greater than 2" (50 mm). Both deliver a high yield and are packaged in easy-to-handle, self-contained, portable containers, designed for hard-to-reach air-sealing jobs.

The Class A rating (flame spread of 25 or less) of FROTH-PAK™ Foam Insulation kit qualifies it as an effective insulation for wall, attic and crawl space applications.

FROTH-PAK™ Foam Sealant has a flame spread of 25†† at a maximum width of 4" and maximum thickness of 2".

A PACK OF FEATURES AND BENEFITS

- Chemically cured, reduced curing time
- Bonds to wood, rigid foam, masonry, metal, drywall and more
- One-step application
- Specialized nozzles – widest selection in the industry today
- Boxed kits with tank handles for enhanced portability
- Self-contained kits need no additional gas cylinders or equipment
- Temperature indicator for consistent quality of end product
- Variety of canister sizes (larger refillable systems available)

FROTH-PAK™ Polyurethane Spray Foam contains isocyanate, hydrofluorocarbon blowing agent and polyol. Read the instructions and Material Safety Data Sheets carefully before use. Wear protective clothing, gloves, goggles or safety glasses, and proper respiratory protection. Supplied air or an approved air-purifying respirator equipped with an organic vapor sorbent and a particle filter may be required to maintain exposure levels below ACGIH, OSHA, WEEL or other applicable limits. Provide adequate ventilation. Contents under pressure.



®™Trademark of The Dow Chemical Company ("Dow") or an affiliated company of Dow

*Available in the United States only

**Source: www.energystar.gov

††Flame spread is 25 in the United States and 30 in Canada

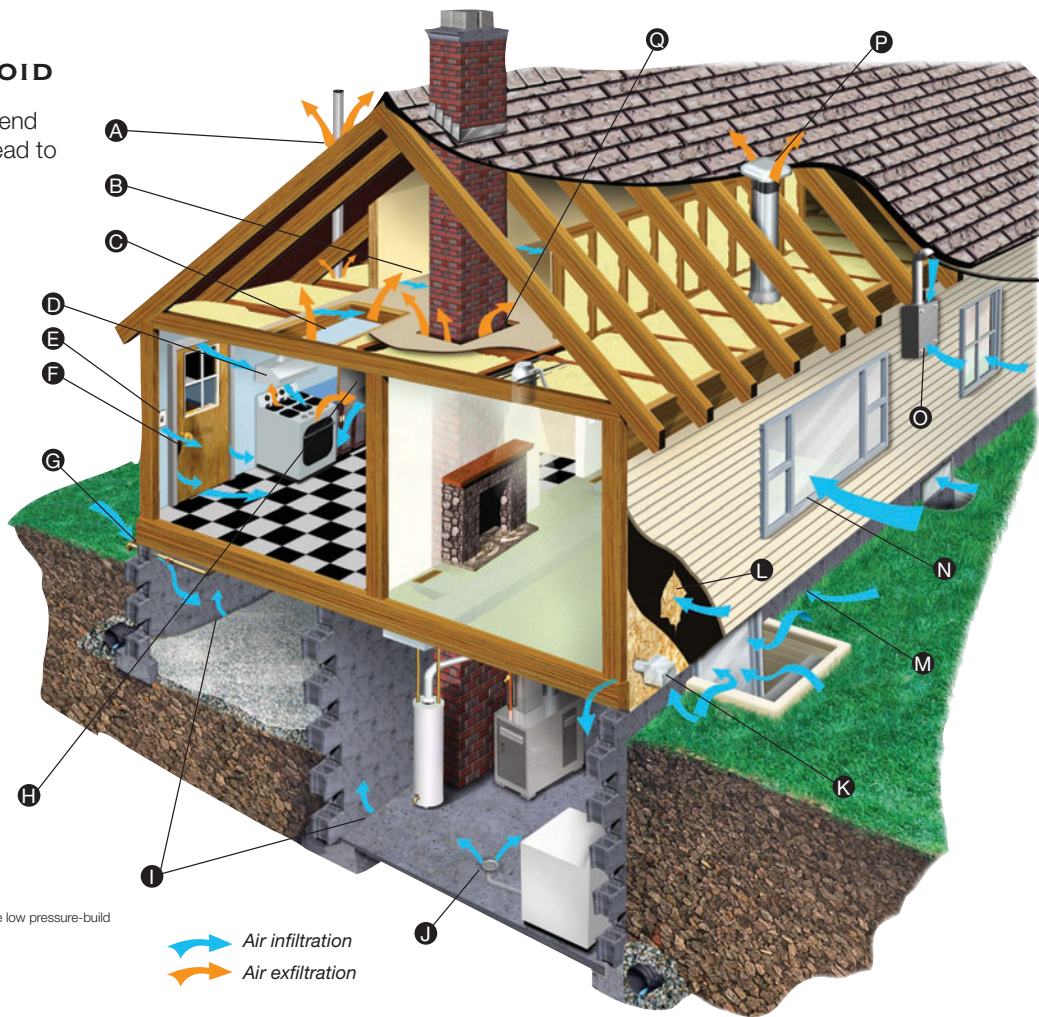
FROTH-PAK™ FILLS THE VOID



FROTH-PAK™ products can quickly put an end to the cracks, crevices and penetrations that lead to energy loss and/or poor water management.

- A Plumbing stack vent
- B Interior partitions
- C Attic hatches
- D Kitchen fan vent
- E Light fixtures/electrical outlets†
- F Gaps/cracks around doors (>2" or 50 mm)**
- G Outdoor faucet
- H Chases/soffits/drop ceilings
- I Cracks/separation in foundation wall/basement floor
- J Floor drain/weeping tile
- K Dryer vent
- L Holes and tears in housewrap/vapor barrier
- M Sill plate
- N Gaps/cracks around windows (>2" or 50 mm)**
- O Entry points for electrical service, TV cable and telephone
- P Bathroom fan vent
- Q Chimney penetrations†

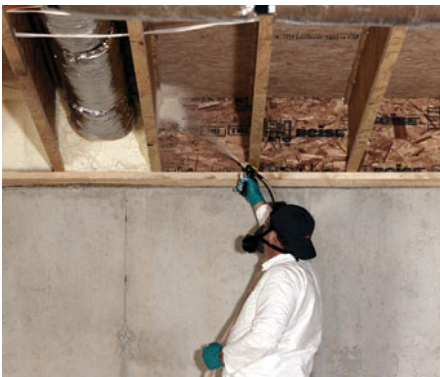
†For gaps and cracks less than 2" (50 mm) around windows and doors, use low pressure-build GREAT STUFF PRO™ Window & Door Insulating Foam Sealant.

‡Maximum service temperature 240°F (116°C).



 Air infiltration
 Air exfiltration

IT SEALS, IT INSULATES



FROTH-PAK™ products are formulated for two distinct applications: insulation or sealant.

For more detailed application information, visit www.sprayfoamatdow.com or contact your Dow Representative.



As an air sealant††, FROTH-PAK™ products are an ideal choice for many applications that require a maximum 4" wide strip of sealant, including:

- Wall/attic penetrations
- Wall cavity parameter air sealing
- Electrical, mechanical and plumbing penetrations
- Other gaps, cracks or crevices in the building envelope



As insulation††, FROTH-PAK™ Foam Insulation kit is well suited for:

- Roof/wall junctions
- Stud wall cavities
- Cold floors above unheated areas such as living area above garage
- Rim or band joists
- Crawl space walls and ceilings
- Attics
- Plumbing wall pipe insulation and support



©™Trademark of The Dow Chemical Company ("Dow") or an affiliated company of Dow

††These applications should be covered with an ignition/thermal barrier, except for rim or band joists, which can be left exposed at 2" (50 mm) foam thickness maximum.

FORGET THE OTHERS; FOLLOW THE LEADER

FROTH-PAK™ Foam Insulation kits and FROTH-PAK™ Foam Sealant kits offer exceptional performance, and moisture and air resistance. Traditional insulations such as fiberglass and cellulose don't always stand up to the test.

TABLE 1: FROTH-PAK™ (1) FOAM SEALANT KITS

Product ⁽²⁾	Theoretical Yield ⁽³⁾ , bd ft (m ³)	Reaction	Density, lb/ft ³ (kg/m ³)	Aged R-Value (RSI) ⁽⁴⁾
FROTH-PAK™ 12	12 (0.03)	Quick	1.9 (30)	4.6 (0.81)
FROTH-PAK™ 120	120 (0.28)	Quick	1.75 (28)	4.7 (0.83)
FROTH-PAK™ 200	200 (0.46)	Quick	1.75 (28)	4.7 (0.83)
FROTH-PAK™ 620	620 (1.46)	Quick	1.75 (28)	4.7 (0.83)

⁽¹⁾ Underwriters Laboratories Listed – foam sealant

⁽²⁾ Larger sizes, including refillable systems, are also available.

⁽³⁾ The theoretical yield has become an industry standard for identifying certain sizes of two-component systems. Theoretical yield calculations are based on perfect laboratory conditions, without taking into account the loss of blowing agent or the variations in application methods and types.

⁽⁴⁾ R means resistance to heat flow. The higher the R-value or RSI, the greater the insulating power. Aged R-value (RSI) measured at 90 days, 140°F (60°C), 50% R.H.

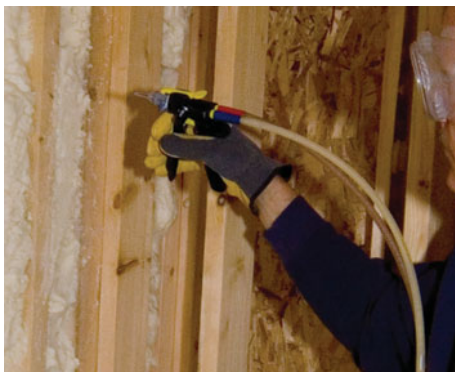


TABLE 2: FROTH-PAK™ (1) FOAM INSULATION KITS

Product ⁽²⁾	Theoretical Yield ⁽³⁾ , bd ft (m ³)	Reaction	Density, lb/ft ³ (kg/m ³)	Aged R-Value (k-factor) ⁽⁴⁾
FROTH-PAK™ Foam Insulation kit 200	200 (0.46)	Quick	1.75 (28)	5.35 (0.027)
FROTH-PAK™ Foam Insulation kit 620	620 (1.46)	Quick	1.75 (28)	5.35 (0.027)

⁽¹⁾ Underwriters Laboratories Listed – Class A foam, 25 flame spread at full coverage

⁽²⁾ Larger sizes, including refillable systems, are also available

⁽³⁾ The theoretical yield has become an industry standard for identifying certain sizes of two-component systems. Theoretical yield calculations are performed in perfect laboratory conditions, without taking into account the loss of blowing agent or the variations in application methods and types.

⁽⁴⁾ R means resistance to heat flow. The higher the R-value (or lower the k-factor) the greater the insulating power. Aged R-value (k-factor) measured at 90 days, 140°F (60°C), 50% R.H.



When wet, fiberglass loses insulating value, and it can provide suitable conditions for mold and mildew growth. FROTH-PAK™ foam resists moisture, reducing the potential for mold and mildew growth.



Compressing fiberglass diminishes its insulating value. When hard-to-fill gaps are stuffed with fiberglass, the result is a poor air seal. FROTH-PAK™ products uniformly fill in gaps and maintain their original shape.

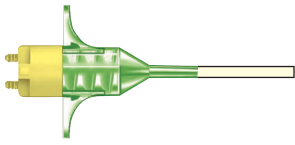


Cellulose insulation has its disadvantages. When improperly installed, there can be gaps around pipe penetrations as shown. Dry-blown cellulose can settle, creating additional air pockets. It can also absorb moisture, significantly reducing its thermal value and allowing the potential for mold and mildew growth. FROTH-PAK™ products, when installed properly, expand to form an airtight seal – even around penetrations. FROTH-PAK™ foam does not settle and resists moisture penetration.

IN CONTROL WITH SPECIALIZED NOZZLES

The INSTA-FLO™ dispensing spray gun from Dow features patented nozzles, eliminating chemical crossover.

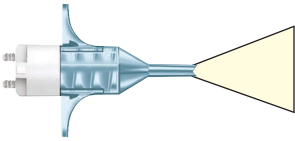
Select from the widest selection of specialized nozzles in the industry:



CAULKING

Controlled bead size

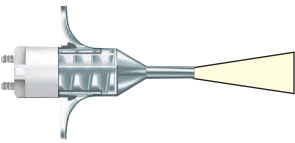
Available:
Yellow Back – Low Output
White Back – Medium Output



FAN/SPRAY

Wide area coverage

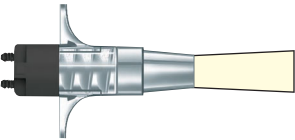
Available:
White Back – Low Output
Gray Back – Medium Output
Black Back – High Output



NS CONE/SPRAY

Small area coverage

Available:
White Back – Low Output
Gray Back – Medium Output
Black Back – High Output

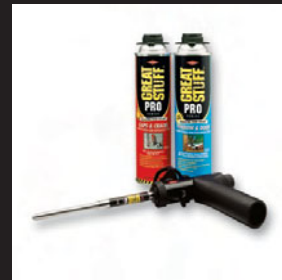


POUR NOZZLE

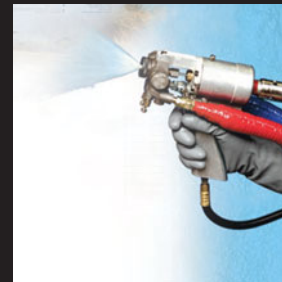
Large volume coverage

Available:
Black Back – High Output

THE RIGHT INSULATING SEALANT FOR THE RIGHT JOB



FOR CAVITIES, CRACKS AND PENETRATIONS LESS THAN 2", Dow recommends GREAT STUFF PRO™ Gaps & Cracks Insulating Foam Sealant. For window and door framework, the low pressure-build, minimal-expanding GREAT STUFF PRO™ Window & Door Insulating Foam Sealant is proven not to distort or bow the framework, when properly installed.



FOR LARGE JOBS, STYROFOAM™ Brand Spray Polyurethane Foam (SPF) Insulation provides seamless protection against moisture and air infiltration. STYROFOAM™ Brand SPF should be installed by a trained SPF applicator.

**BREAK WITH TRADITIONAL INSULATION AND SEALANT.
LEAD THE WAY WITH FROTH-PAK™ FOAM INSULATION KITS
AND FROTH-PAK™ FOAM SEALANT KITS.**

1-866-583-BLUE (2583) • www.sprayfoamatdow.com

NOTICE: No freedom from any patent owned by Dow or others is to be inferred. Because use conditions and applicable laws may differ from one location to another and may change with time, Customer is responsible for determining whether products and the information in this document are appropriate for Customer's use and for ensuring that Customer's workplace and disposal practices are in compliance with applicable laws and other government enactments. The product shown in this literature may not be available for sale and/or available in all geographies where Dow is represented. The claims made may not have been approved for use in all countries or regions. Dow assumes no obligation or liability for the information in this document. References to "Dow" or the "Company" mean The Dow Chemical Company and its consolidated subsidiaries unless otherwise expressly noted. **NO WARRANTIES ARE GIVEN; ALL IMPLIED WARRANTIES OF MERCHANTABILITY OR FITNESS FOR A PARTICULAR PURPOSE ARE EXPRESSLY EXCLUDED.**

FROTH-PAK™ Polyurethane Spray Foam contains isocyanate, hydrofluorocarbon blowing agent and polyol. Read the instructions and Material Safety Data Sheets carefully before use. Wear protective clothing, gloves, goggles or safety glasses, and proper respiratory protection. Supplied air or an approved air-purifying respirator equipped with an organic vapor sorbent and a particle filter may be required to maintain exposure levels below ACGIH, OSHA, WEEL or other applicable limits. Provide adequate ventilation. Contents under pressure.

GREAT STUFF PRO™, ENERFOAM™ and ENERBOND™ sealant and adhesive products contain isocyanate and a flammable blowing agent. Read the label and Material Safety Data Sheet carefully before use. Eliminate all sources of ignition before use. Wear gloves, and safety glasses or goggles. Provide adequate ventilation or wear proper respiratory protection. Contents under pressure.

STYROFOAM™ Brand Spray Polyurethane Foam contains isocyanate, hydrofluorocarbon blowing agent and polyol. Read the instructions and Material Safety Data Sheets carefully before use. Wear protective clothing, gloves, goggles and proper respiratory protection. Supplied air or an approved air-purifying respirator equipped with an organic vapor sorbent and a particle filter is required to maintain exposure levels below ACGIH, OSHA, WEEL or other applicable limits. Provide adequate ventilation. Contents under pressure. STYROFOAM™ Brand SPF should be installed by a trained SPF applicator.

Building and/or construction practices unrelated to building materials could greatly affect moisture and the potential for mold formation. No material supplier including Dow can give assurance that mold will not develop in any specific system.

FOR TECHNICAL INFORMATION: 1-866-583-BLUE (2583)
FOR SALES INFORMATION: 1-800-232-2436
THE DOW CHEMICAL COMPANY
Dow Building Solutions • 200 Larkin • Midland, MI 48674

FOR TECHNICAL INFORMATION: 1-866-583-BLUE (2583) (English) • 1-800-363-6210 (French)
FOR SALES INFORMATION: 1-800-232-2436 (English) • 1-800-565-1255 (French)
DOW CHEMICAL CANADA ULC
Dow Building Solutions • Suite 2100 • 450 – 1st St. SW • Calgary, AB T2P 5H1

a proud partner of



Printed in U.S.A.

Form No. 179-07393X-0210MCK
178-00456X-0210MCK

MCKAY203360

